

# AN11771

## E-Paper demo design with the LPC82x

Rev.1.0— 1 December 2015

### Document information

| Info            | Content   |
|-----------------|---|
| <b>Keywords</b> | LPC824M201JHI33, LPC822M101JHI33, LPC824M201JDH20, LPC822M101JDH20, E-paper, E-ink  |
| <b>Abstract</b> | This application note illustrates how to design an E-paper system. Board-schematics and LPC824 demo code projects for Keil MDK, IAR EWARM, and LPCXpresso IDE are included. |



**Revision history**

| Rev | Date     | Description     |
|-----|----------|-----------------|
| 1.0 | 20151201 | Initial version |

**Contact information**

For more information, please visit: <http://www.nxp.com>

## 1. Introduction

This application note details an E-paper display system driven by the LPC824, introducing a driver circuit, presenting how to prepare and encode the black and white picture and providing demo code to display the picture on a 4-grey level E-paper display.

The E-paper display used in this application is the GDE029 from Good Display, featuring a 2.9 inches active area containing 128x296 pixels, with 2-bit full display capabilities. For more details about the E-paper see the GDE029 <http://www.good-display.com>.

## 2. Hardware design introduction

This demo system is based on the LPC824 LPCXpresso V2/mbed board and a custom E-paper display daughter board. For connection details refer to schematics in the zip package.

### 2.1 Functional block diagram

The system block diagram is shown below in [Fig 1](#).

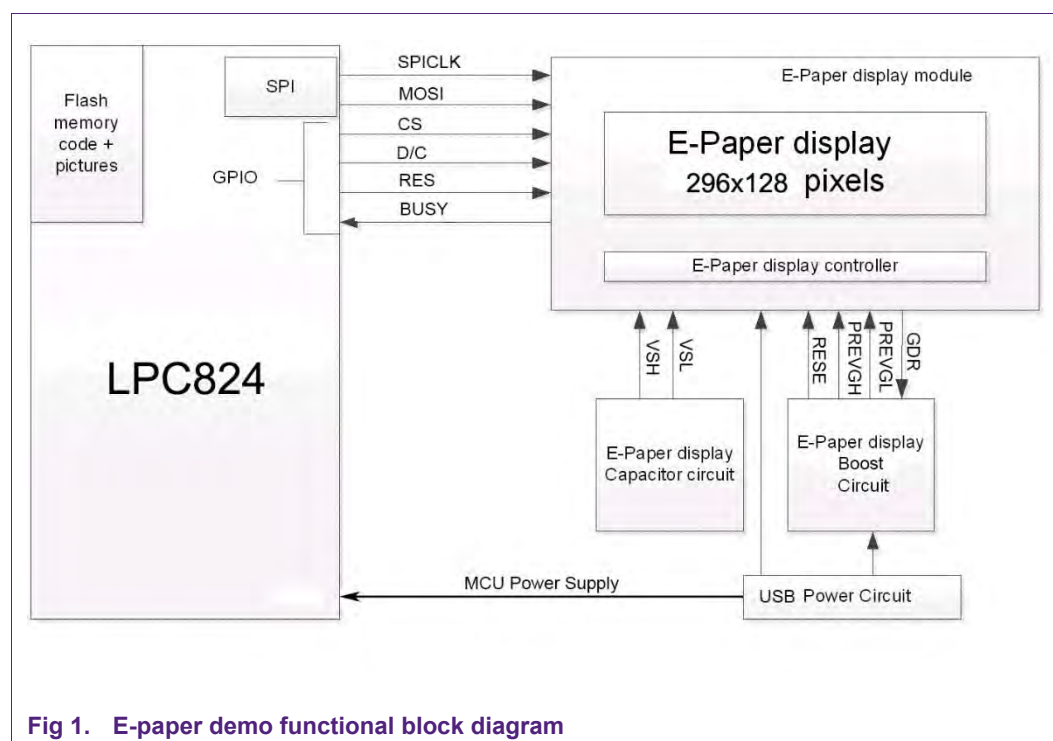


Fig 1. E-paper demo functional block diagram

In addition to SPI signals, some external signals are used to exchange information between LPC824 and E-paper display implemented with GPIO:

- **RES:** This signal is generated by LPC824, it is used to reset the E-paper Registers and to clear any on-going refresh.
- **D/C:** Data/Command line. This output signal is generated by LPC824 and used to alert the E-paper display if a Command or Data value is being sent via the SPI.

- **CS:** This is a Chip Select pin. This output signal is generated by LPC824 and used to enable the SPI Slave embedded in the E-paper display module.
- **BUSY:** This signal is generated by the E-paper display module used to inform the LPC824 about the module status. When the software launches a refresh, the busy bit is set and no more action should be taken on the E-paper display (no more command or data) to avoid any corruption on the display.

The main communication between the MCU and the E-paper module happens through SPI interface.



Fig 2. E-paper display demo

### 3. GDE029 E-paper introduction

The main GDE029 E-paper features are summarized below:

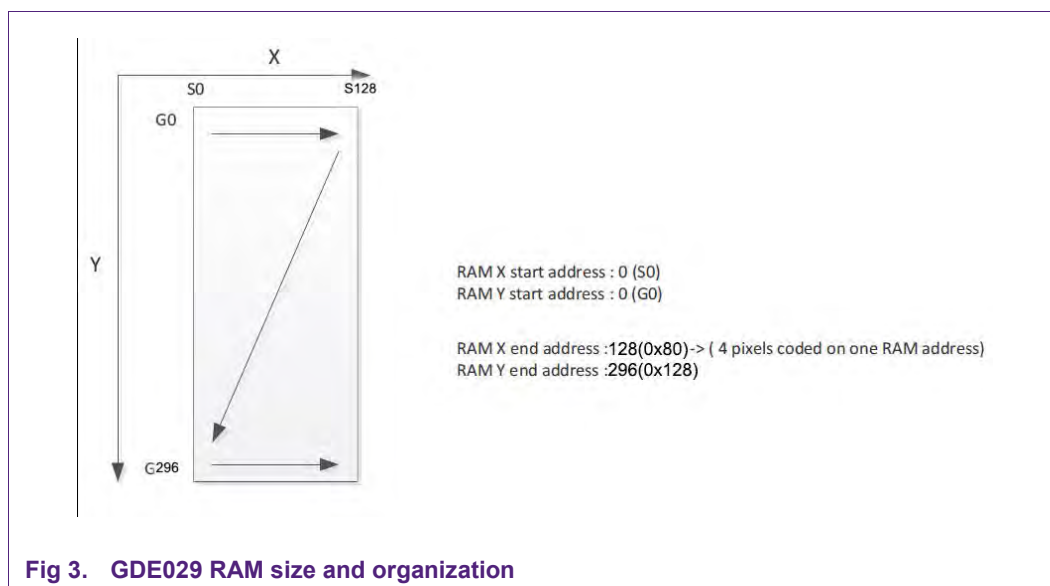
- 2.9 inches active area
- 128x296 pixels
- 2-bit full display capabilities.

#### 3.1 Picture and data size

To display an image, the E-paper module's internal RAM must be filled with data through the LPC824 SPI interface. Each picture or frame consists of 128x296 pixels with 2-bit display capabilities. This results in a RAM size per frame =  $(128/4) \times 296 = 9472$  Byte

The frame data is stored in FLASH memory, the LPC824 has 32k Byte flash and can store up to 3 pictures depending on the application.

The RAM size and organization is illustrated in [Fig 3](#).



### 3.2 E-paper power management

For power optimization the display supports a Power Off command. After the Power Off command is issued, the display driver will power off based on the power off Sequence and the BUSY line will be turned low. This command will turn off charge pump, T-con, source driver, gate driver, VCOM and temperature sensor but the register data will be retained until VDD is turned off. This command can be active only when BUSY = '1'.

| Power OFF |           |     |    |    |    |    |    |    |    |    |    |         |
|-----------|-----------|-----|----|----|----|----|----|----|----|----|----|---------|
| Code      | Inst/Para | R/W | DC | D7 | D6 | D5 | D4 | D3 | D2 | D1 | D0 | Default |
| R02H      | POF       | W   | 0  | 0  | 0  | 0  | 0  | 0  | 0  | 1  | 0  | (02H)   |

Fig 4. E-paper power off command

Fig 4. E-paper power off command

This command will result E-paper enter into sleep mode, reducing the module power below 50uA.

If using the above method, the power consumption still cannot fit the application requirements, then a MOSFET can be used to control all power to the E-paper, taking advantage of the fact that the E-paper keeps the picture without any power. Once the picture refresh is completed, the MCU shuts down the power to E-paper via the MOSFET, at this point the MCU can be put in to the appropriate power saving mode.

In most application of E-paper, e.g. electric price label, the second solution can be implemented.

### 3.3 E-paper picture creation

To generate a picture for the e-paper, the user can use any picture-to-LCD software to get a C constant code from a picture.

One free tool can be download from NXP website:

<https://www.lpcware.com/content/nxpfile/emwin-installer-lpc1788-ea-board-keil-mdk>

Follow the steps below to generate C constant code from a .bmp image file,

- Generate a .bmp file with 128x296 pixels by Paint
- Open the .bmp file with BmpCvt.exe
- On menu select: Image – Convert Into – Gray4
- Then: Image – Invert – Indices
- Then: Image – Transparency – Index0:000000
- At last: File – Save As - \*.c (select '2 bit pixel format' in format selection window).

When generating an output picture of 128x296 pixels with 4-grey level, then the .c file should be 9472 byte in size.

For the example demo code to display a picture shown in [Fig 5](#) the user must generate a C constant code, shown in [Fig 6](#), using the picture to LCD conversion software.

The generated C constant code contains a 2D array of 128x592 bits that represents pixel values. User can update one of the three pictures displayed in demo code by replacing one of the arrays in Ap\_29demo.h file with the newly generated array.

[Fig 5](#) is the picture to display on screen and [Fig 6](#) represents demo C code for that picture.



Fig 6. 9472 Byte C constant code

## 4. Software

Project code for this demo application is provided for the following toolchains:

- Keil MDK v5.14
- IAR EWARM v740
- LPCXpresso v7.9.0

### 4.1 Software Flowchart

The code operational flowchart is shown in [Fig 7](#).

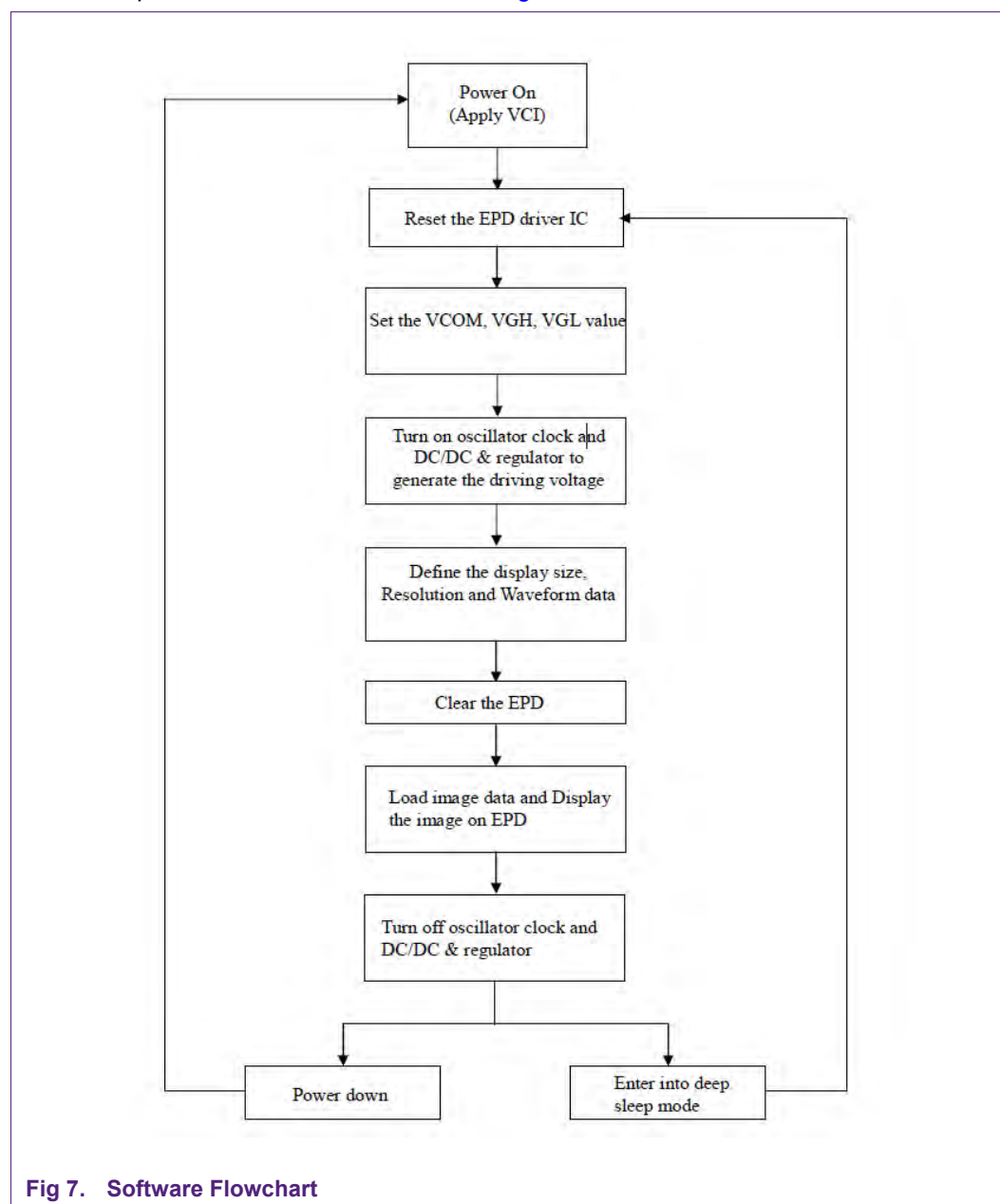


Fig 7. Software Flowchart



## 4.2 Software functions description

The main software routines used by this application code are described in the [Table 1](#):

**Table 1. Software functions description**

| Software functions  | Description   |
|---|---|
| EPD_W21_Init(void)  | Initialize the E-paper.   |
| Chip_GPIO_SetPinOutLow(LPC_GPIO_PORT, 0, RES);<br>Chip_GPIO_SetPinOutHigh(LPC_GPIO_PORT, 0, RES); | Generate the reset signal to the E-paper display.   |
| Chip_GPIO_SetPinOutLow(LPC_GPIO_PORT, 0, CS);<br>Chip_GPIO_SetPinOutHigh(LPC_GPIO_PORT, 0, CS);   | Control CS pin of the E-paper   |
| Chip_GPIO_SetPinOutLow(LPC_GPIO_PORT, 0, DC);<br>Chip_GPIO_SetPinOutHigh(LPC_GPIO_PORT, 0, DC);   | Command write.<br>Data write.   |
| EPD_W21_WriteCMD( );<br>EPD_W21_WriteDATA();  | Write command to E-paper, need wait for the BUSY signal de-assertion from the E-paper.<br>Write data follow the command sent. |

## 5. Demo introduction

### 5.1 Demo under Keil

Use an on board debugger (MBED CMSIS-DAP) to debug and download the project.

- Library files are already extracted to the project. No need to compile the library for board and chip. Compile and download the project and press “reset” button or unplug & plug power to execute the downloaded project.
- Project file can be found at:

..\applications\lpc8xx\keil\_uvision\_projects\nxp\_lpcxpresso\_824\periph\E-paper

- Default project will display 3 pictures turn-by-turn.

**NOTE:** If your IDE does not detect CMSIS-DAP, try installing serial port driver for mbed Windows from <https://developer.mbed.org/handbook/Windows-serial-configuration#1-download-the-mbed-windows-serial-port>.

### 5.2 Demo under IAR

Use an on board debugger to debug and download the project.

- Open the E-paper workspace, can be found at:

..\applications\lpc8xx\iar\_ewarm\_projects\nxp\_lpcxpresso\_824\periph\E-paper

- Import Chip and Board library to E-paper workspace through ‘Import existing project’ option. The Chip and Board libraries can be found at:

..\software\lpc\_core\lpc\_chip\chip\_8xx

..\software\lpc\_core\lpc\_board\boards\_8xx\nxp\_lpcxpresso\_824

Compile the Chip and Board library project respectively.

**NOTE:** To compile the project successfully, “MAKE” board library twice after compiling to get “board\_nxp\_lpcxpresso\_824.a”.

- Compile and download E-paper project to the board.
- After the project is downloaded to the board, unplug and plug power cable to reboot the system. Wait for at least 2 seconds before plugging in the power cable.

**NOTE:** If your IDE does not detect CMSIS-DAP, try installing serial port driver for mbed windows from: <https://developer.mbed.org/handbook/Windows-serial-configuration>, search for “Windows Serial Configuration” string and navigate to the first link appeared after the search.

### 5.3 Demo under LPCXpresso

Use an on board debugger to debug and download the project.

- In 'Quickstart panel' window, click on 'Import new project' option and enter .zip file's path to import an E-paper project "AN\_E\_paper\_LPCXpresso.zip".
- Build the project. Click on 'Build all projects' option in 'Quickstart Panel' window to build.
- Flash the project on the board, use program flash button in symbol tray and browse for the .axf file of the project in 'Select File' field.
- Press the "reset" button, or unplug & plug power to reboot the system.
- Only 2 pictures can be displayed as LPCXpresso generates larger compiled files than Keil & IAR.

**NOTE:** If your IDE does not detect CMSIS-DAP, try installing serial port driver for mbed Windows from <https://developer.mbed.org/handbook/Windows-serial-configuration#1-download-the-mbed-windows-serial-port>.

## 6. Conclusion

The LPC824 LPCXpresso V2/mbed board provides functionality to interface 4-grey level E-paper display daughter board. The application note describes how a picture can be created by using NXP's emWin tool and display it on E-paper display, how the power optimization is done in the system, and the demo to run the E-paper display on Keil/IAR/LPCXpresso.

## 7. Legal information

### 7.1 Definitions

**Draft** — The document is a draft version only. The content is still under internal review and subject to formal approval, which may result in modifications or additions. NXP Semiconductors does not give any representations or warranties as to the accuracy or completeness of information included herein and shall have no liability for the consequences of use of such information.

### 7.2 Disclaimers

**Limited warranty and liability** — Information in this document is believed to be accurate and reliable. However, NXP Semiconductors does not give any representations or warranties, expressed or implied, as to the accuracy or completeness of such information and shall have no liability for the consequences of use of such information. NXP Semiconductors takes no responsibility for the content in this document if provided by an information source outside of NXP Semiconductors.

In no event shall NXP Semiconductors be liable for any indirect, incidental, punitive, special or consequential damages (including - without limitation - lost profits, lost savings, business interruption, costs related to the removal or replacement of any products or rework charges) whether or not such damages are based on tort (including negligence), warranty, breach of contract or any other legal theory.

Notwithstanding any damages that customer might incur for any reason whatsoever, NXP Semiconductors' aggregate and cumulative liability towards customer for the products described herein shall be limited in accordance with the *Terms and conditions of commercial sale* of NXP Semiconductors.

**Right to make changes** — NXP Semiconductors reserves the right to make changes to information published in this document, including without limitation specifications and product descriptions, at any time and without notice. This document supersedes and replaces all information supplied prior to the publication hereof.

**Suitability for use** — NXP Semiconductors products are not designed, authorized or warranted to be suitable for use in life support, life-critical or safety-critical systems or equipment, nor in applications where failure or malfunction of an NXP Semiconductors product can reasonably be expected to result in personal injury, death or severe property or environmental damage. NXP Semiconductors and its suppliers accept no liability for inclusion and/or use of NXP Semiconductors products in such equipment or applications and therefore such inclusion and/or use is at the customer's own risk.

**Applications** — Applications that are described herein for any of these products are for illustrative purposes only. NXP Semiconductors makes no representation or warranty that such applications will be suitable for the specified use without further testing or modification.

Customers are responsible for the design and operation of their applications and products using NXP Semiconductors products, and NXP Semiconductors accepts no liability for any assistance with applications or customer product design. It is customer's sole responsibility to determine whether the NXP Semiconductors product is suitable and fit for the customer's applications and products planned, as well as for the planned application and use of customer's third party customer(s). Customers should provide appropriate design and operating safeguards to minimize the risks associated with their applications and products.

NXP Semiconductors does not accept any liability related to any default, damage, costs or problem which is based on any weakness or default in the

customer's applications or products, or the application or use by customer's third party customer(s). Customer is responsible for doing all necessary testing for the customer's applications and products using NXP Semiconductors products in order to avoid a default of the applications and the products or of the application or use by customer's third party customer(s). NXP does not accept any liability in this respect.

**Export control** — This document as well as the item(s) described herein may be subject to export control regulations. Export might require a prior authorization from competent authorities.

**Translations** — A non-English (translated) version of a document is for reference only. The English version shall prevail in case of any discrepancy between the translated and English versions.

**Evaluation products** — This product is provided on an "as is" and "with all faults" basis for evaluation purposes only. NXP Semiconductors, its affiliates and their suppliers expressly disclaim all warranties, whether express, implied or statutory, including but not limited to the implied warranties of non-infringement, merchantability and fitness for a particular purpose. The entire risk as to the quality, or arising out of the use or performance, of this product remains with customer.

In no event shall NXP Semiconductors, its affiliates or their suppliers be liable to customer for any special, indirect, consequential, punitive or incidental damages (including without limitation damages for loss of business, business interruption, loss of use, loss of data or information, and the like) arising out of the use of or inability to use the product, whether or not based on tort (including negligence), strict liability, breach of contract, breach of warranty or any other theory, even if advised of the possibility of such damages.

Notwithstanding any damages that customer might incur for any reason whatsoever (including without limitation, all damages referenced above and all direct or general damages), the entire liability of NXP Semiconductors, its affiliates and their suppliers and customer's exclusive remedy for all of the foregoing shall be limited to actual damages incurred by customer based on reasonable reliance up to the greater of the amount actually paid by customer for the product or five dollars (US\$5.00). The foregoing limitations, exclusions and disclaimers shall apply to the maximum extent permitted by applicable law, even if any remedy fails of its essential purpose.

### 7.3 Licenses

#### Purchase of NXP <xxx> components

<License statement text>

### 7.4 Patents

Notice is herewith given that the subject device uses one or more of the following patents and that each of these patents may have corresponding patents in other jurisdictions.

<Patent ID> — owned by <Company name>

### 7.5 Trademarks

Notice: All referenced brands, product names, service names and trademarks are property of their respective owners.

<Name> — is a trademark of NXP Semiconductors N.V.

## 8. Contents

---

|           |  |           |
|-----------|--|-----------|
| <b>1.</b> | <b>Introduction .....</b>                | <b>3</b>  |
| <b>2.</b> | <b>Hardware design introduction.....</b> | <b>3</b>  |
| 2.1       | Functional block diagram .....           | 3         |
| <b>3.</b> | <b>GDE029 E-paper introduction .....</b> | <b>5</b>  |
| 3.1       | Picture and data size.....               | 5         |
| 3.2       | E-paper power management.....            | 6         |
| 3.3       | E-paper picture creation.....            | 6         |
| <b>4.</b> | <b>Software .....</b>                    | <b>8</b>  |
| 4.1       | Software Flowchart .....                 | 8         |
| 4.2       | Software functions description .....     | 9         |
| <b>5.</b> | <b>Demo introduction .....</b>           | <b>10</b> |
| 5.1       | Demo under Keil .....                    | 10        |
| 5.2       | Demo under IAR .....                     | 10        |
| 5.3       | Demo under LPCXpresso .....              | 11        |
| <b>6.</b> | <b>Conclusion.....</b>                   | <b>11</b> |
| <b>7.</b> | <b>Legal information .....</b>           | <b>12</b> |
| 7.1       | Definitions .....                        | 12        |
| 7.2       | Disclaimers.....                         | 12        |
| 7.3       | Licenses.....                            | 12        |
| 7.4       | Patents.....                             | 12        |
| 7.5       | Trademarks.....                          | 12        |
| <b>8.</b> | <b>Contents.....</b>                     | <b>13</b> |

---

Please be aware that important notices concerning this document and the product(s) described herein, have been included in the section 'Legal information'.

---